



**Clinical
Training Simulator**

MB/L260A Advanced Comprehensive Puncture and Percussion Examination Training Simulator

Comprehensive puncture and percussion examination skills training are the important part of "Multimedia integrated clinical skills training laboratory system", which is the important subject of national education science "Tenth Five-Year Plan". The simulative standard patient is a young man simulator, which is prostrate, supine position, head leans to left side, with flexible and durable material and obvious signs of bones, clavicle, costal bone, intercostal space, bellybutton, articulation of pubis, anterior superior iliac spine, sternocleidomastoid muscle, crural ligament, all these tissues are in accordance with real human anatomical position and can be touched according to anatomical knowledge and find the correct needle point. The system consists of host computer and manikin.

Realistic Manikin:

1. Automatically pulse of carotid artery and femoral artery
2. Percussion: aeropleura position and extent, liver border of dullness, shifting dullness in abdomen
3. Liver puncture septic surgery operation, patient may groan;
4. Replaceable bone marrow puncture modules
5. Voice prompts for correct and wrong puncture

Convenient and flexible console:

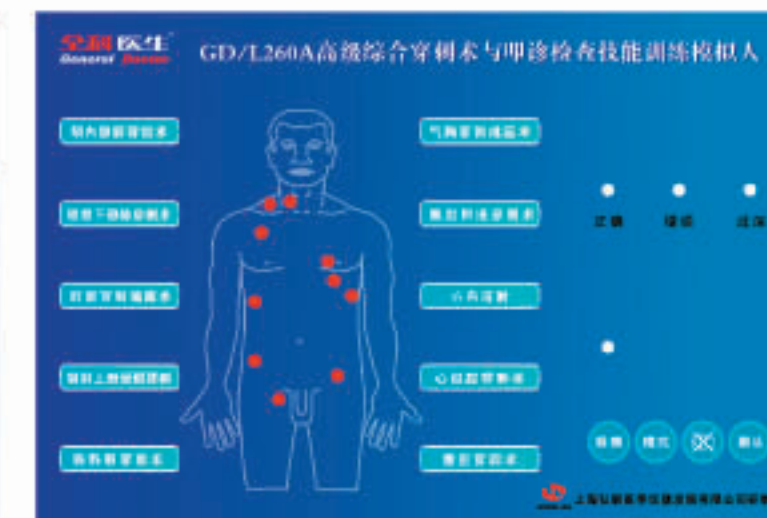
1. Convenient to move, simple fixation and stable
2. Manikin's body position can be changed easily, supine position, sitting position, semi-sitting position and right arm reclining, etc
3. Select button on the control desk, with body contour, instruct the needle site
4. Liver puncture: can choose breath holding prompts to limit the puncture time, puncturing during the breath holding time is correct

Realistic simulation of operation process, provide 11 kinds of operation and puncture training

1. Sterile operation
2. Right internal jugular vein puncture
3. Right subclavian vein puncture
4. Right femoral vein puncture
5. Left aeropleura puncture
6. Left pleural effusion puncture
7. Liver puncture septic
8. Abdominal puncture
9. Pericardial chamber puncture
10. Intracardiac injection
11. Anterior superior iliac spine bone marrow puncture



percussion



Note: The layout of the scene is needed and the number of student test-bed is unlimited.

MB/L260B Advanced Comprehensive Puncture Skills Training Simulator (Anteverted Sitting Position)

The product is designed for improving medical workers' thoracic and lumbar puncture skills. It provides repeated practice without bring suffering to patients, to achieve the purpose of proficient and rapid completion of the operation.

Features:

1. The manikin backward sits in the armchair, arms put on the edge of the chair back, and head puts in the forearm
2. Distinct body surface symbols, can touch armpit, the seventh cervical vertebra, thoracic vertebra, bladebone, costal bone, intercostal space and lumbar
3. Thoracic puncture and lumbar puncture
4. Thoracic puncture:
 - Various puncture site: the seventh to ninth intercostal puncture of infrascapular line and the fifth to sixth intercostal puncture of axillary midline;
 - When needle penetrates through the partial pleura, needle resistance disappears, connect the syringe and extract the pleural effusion
5. Lumbar puncture
 - Realistic simulated waist anatomical structure with skin and subcutaneous tissue
 - Touch feeling as in human body when the spinal type needle penetrates into all layers of organization
 - A feeling of "pop" can be felt when the puncture is correct, collect cerebrospinal fluid and measure pressure of cerebrospinal fluid in the special cases
 - With a part of the lumbar spine skeleton model, help understand the structure and function of the waist
 - One of the puncture modules can directly observe the anatomical characteristic of the lumbar spine skeleton and directly see the spinal type needle position
 - Can realize two people on the operation of lumbar puncture
 - Wireless remote control operation mode, English voice prompts for correct and wrong operation during the entire process.



MB/L69A Central Venous Catheterization and Intramuscular Injection Simulator

Features:

1. Internal jugular artery, carotid, subclavian vein, femoral artery and vein
2. Puncture training of internal jugular vein, subclavian vein and femoral vein
3. Long cannula catheterization training
4. Simulative carotid and femoral artery pulse
5. Subclavian anatomy structure
6. Femoral anatomy structure



Size: 97cm x 28cm x 62cm
G.W.: 15kg



MB/L69B Central Venous Catheterization Simulator

The cervical veins are filled with red simulative blood for internal jugular vein and subclavical vein puncturing use. Squeeze bulb can simulate carotid artery pulse. With accurate anatomy, palpation is exactly the same as on a patient. Replacing of the internal tubing and skin is extremely easy.

Features:

1. Cervical anatomical landmarks are quite clear and indicate structures of the sternal notch, clavicle, right cervical ribs, sternocleidomastoid and etc.
2. Venous system in the deep part of left neck consists of common carotid artery, internal jugular vein, external jugular vein, subclavical vein and brachiocephalic vein.
3. Internal jugular vein puncture and cannulation can be exercised.
4. Subclavical vein puncture and cannulation can be exercised.
5. Carotid artery pulse can be simulated.
6. The skin and veins can be replaced and students will feel an apparent "POP" when the needle has been thrust into the vein.
7. The heart floating swan-ganz intubation can be exercised.



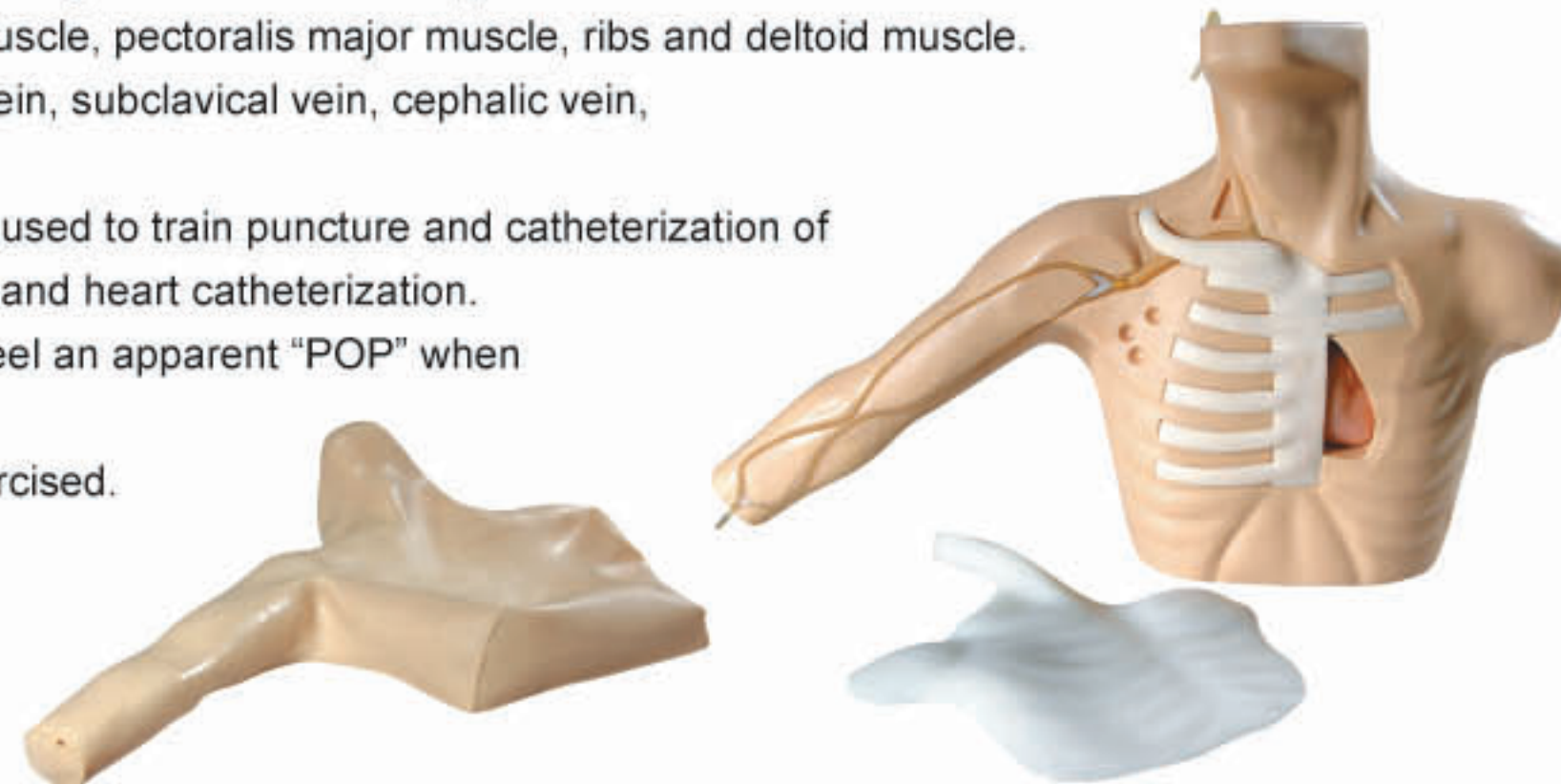
MB/L69C PICC Line

The model is suitable for central venipuncture of internal carotid vein and subclavical vein and peripheric venipuncture (arm veins) of cephalic vein. The cervical veins and arm veins can be filled with simulative blood.

Features:

1. The model is a simulative right half of adult torso with right arm. There are apparent anatomical marks: clavicle, suprasternal notch, sternocleidomastoid muscle, pectoralis major muscle, ribs and deltoid muscle.
2. Lifelike veins: superior vena cava, internal jugular vein, subclavical vein, cephalic vein, basilic vein and median cubital vein, etc.
3. With apparent anatomical marks, the model can be used to train puncture and catheterization of internal carotid vein, subclavical vein, cephalic vein and heart catheterization.
4. The skin and veins can be replaced. Students will feel an apparent "POP" when puncture needle has been thrust into the veins.
5. The heart floating swan-ganz intubation can be exercised.

Size: 77cm x 24cm x 53cm
G.W.: 15kg



MB/L69D Advanced Neonatal Peripheral and Central Vein Intubation Simulator

Designed according to the physiological and anatomical characteristic of neonate, made of imported plastic material, soft and elastic skin, easy to clean, and provide technology of inserting into central vein catheter via peripheral vein.

Features:

1. Transparent chest wall and made of special material, perspective effect of bilateral venous channel
2. Correct anatomical position: basilic vein, cephalic vein, jugular vein, subclavian vein and superior vena
3. Direct observation of rib and heart, measure the correct inserted length of catheter
4. Transparent part of the superior vena and visible of the ductal position in the case of correct catheterization, or the catheter is invisible;
5. Exercise of standard venous catheterization position



MB/L66 Pneumothorax Treating Simulator

The model is a half torso of an adult male. With lifelike shape and realistic chest anatomy, the model provides a practical training tool for clinical teaching. It is suitable for medical college, nursing school and clinical workers to demonstrate and exercise pneumothorax treating.

Features:

1. Anatomy structure: clavicle, suprasternal notch, angle of sternum, cervical rib and spatia intercostalia.
2. Use pneumothorax needle to exercise decompression of tension pneumothorax.
3. The lung bag can be used repeatedly.
4. puncture site: The second intercostals puncture of bilateral subclavian central line, the fifth intercostals of aillary line.

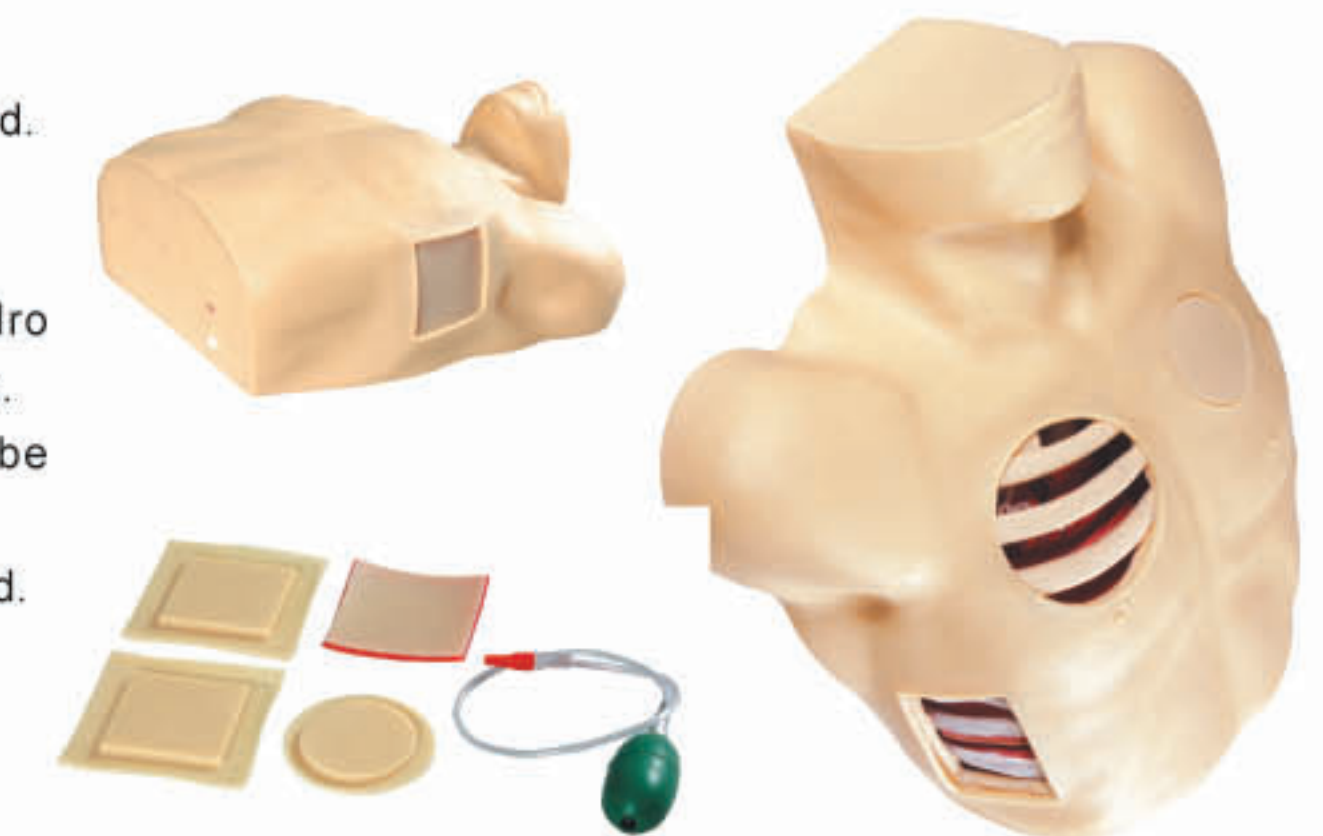


MB/L67 Pleural Drainage Simulator

This manikin is an ideal teaching aid of pneumothorax decompression and closed chest drainage of hydropneumothorax.

Features:

1. Pneumothorax decompression, closed chest drainage of hydropneumothorax and drainage tube care after operation can be practiced.
2. There are two visual windows in right thorax to show each layer of anatomical structures.
3. Pneumothorax decompression training, closed drainage of hydro pneumothorax training and thoracocentesis training in the left thorax.
4. The color, volume and viscosity of the drainage solution can be regulated.
5. The puncture cushion and drainage wounds cushion can be replaced.



MB/L64 Peritoneal Dialysis Simulator

The simulator is designed to introduce the essentials of Continuous Ambulatory Peritoneal Dialysis (CAPD) procedures and care to patients, students, and nurses. The realistic torso offers a lifelike method to demonstrate and practice peritoneal dialysis.



MB/L68A Lumbar Puncture Simulator

Features:

1. In order to facilitate observing the shape of lumbar, the place of the L1 and L2 is uncovered.
2. L3, L4, L5 spinous process and sacrococcyx are the functional positions for puncturing. Clear marks on these parts facilitate to skills training, including lumbar anesthesia, epidural anesthesia and caudal anesthesia.
3. The exercise process can be operated in sitting position or lateral position.

Size: 48cm x 29cm x 50cm
G.W.: 12kg



MB/L68B Advanced Infant Lumbar Puncture Simulator

Features:

1. Life size infant, side lying on the lamina dura bed, head bend to the chest, bend knees to the abdomen and low back bend, both hands hold knees, also can simulate sitting position
2. Accurate bone markers: obvious interspace of spinous process and posterior superior iliac spine
3. Puncture position: 3-4 lumbar intervertebral space
4. Realistic touch feeling and a characteristic of "pop" can be felt when needle penetrates into veins, outflow of simulated cerebrospinal fluid proves correct puncture position
5. With spare canalis spinalis and puncture needle

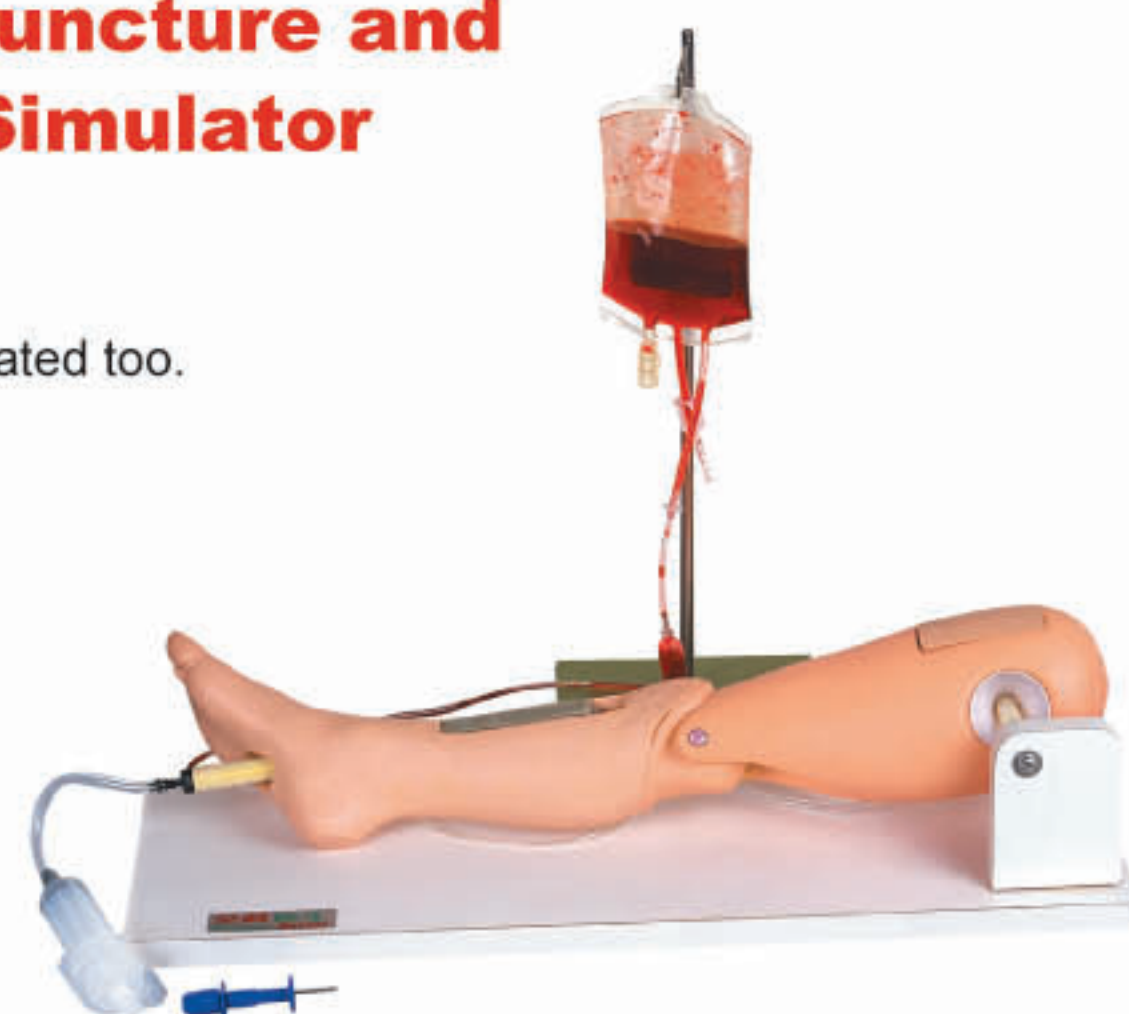


MB/L65A Bone Marrow Puncture and Femoral Venipuncture Simulator

This product is produced to help intraosseous infusion training.
With femoral venipuncture simulator, femoral venipuncture can be simulated too.

Features:

1. There are realistic anatomy of humerus and shinbone.
2. If intraosseous puncture is succeeded, you can feel a "pop" And liquid return can be obtained.
3. The puncture structure can be replaced. There are 10 sets of puncture bone supplied with the model.



MB/L65B Advanced Infant Bone Marrow Puncture Simulator

Features:

1. Provide infant legs tibia puncture operation and realistic sense of needle; there is an obvious feeling when needle penetrates into veins and outflow of simulated bone marrow
2. Recovery of pinhole on facies ossea
3. Provide four side puncture of the tibial rod



MB /L70 Advanced Electronic Shoulder Joint Intracavitary Injection Simulator

Features:

1. Standard anatomical structure, scapula, clavicle, humerus, deltoid, biceps muscle of arm and important ligament of shoulder joint, train palpation technology of shoulder puncture positioning
2. Standard position study for puncture and injection
3. Six different parts for puncture and injection
 - 1) Cavity of shoulder joint (anterior aspect)
 - 2) Cavity of shoulder joint (rear aspect)
 - 3) Subacromial bursitis
 - 4) Acromioclavicular joint
 - 5) Masticatory tendinous sheath of biceps muscle of arm
 - 6) Suprascapular nerve block
4. Intelligent evaluation system: The green light on the control box will indicate correct puncture site.
5. Skin surface can be washed by subs



MB/L71 Advanced Electronic Elbow Joint Intracavitary Injection Simulator

Features:

1. Standard anatomical structure with internal condyle of humerus, external condyle of humerus, cubital nerve, ulna, radial bone and cavity of elbow joint
2. Therapy site of golf elbow and tennis elbow
3. Right arm elbow bend and can rotate along a fixed axis
4. Yellow light indicates correct pressure pain point, green light on the control box indicates correct puncture site, red light indicates wrong puncture site when the needle inserts into the cubital nerve of the rear internal condyle of humerus
5. Used for therapy training of soft tissue intra-articular injection for elbow injury and inflammation

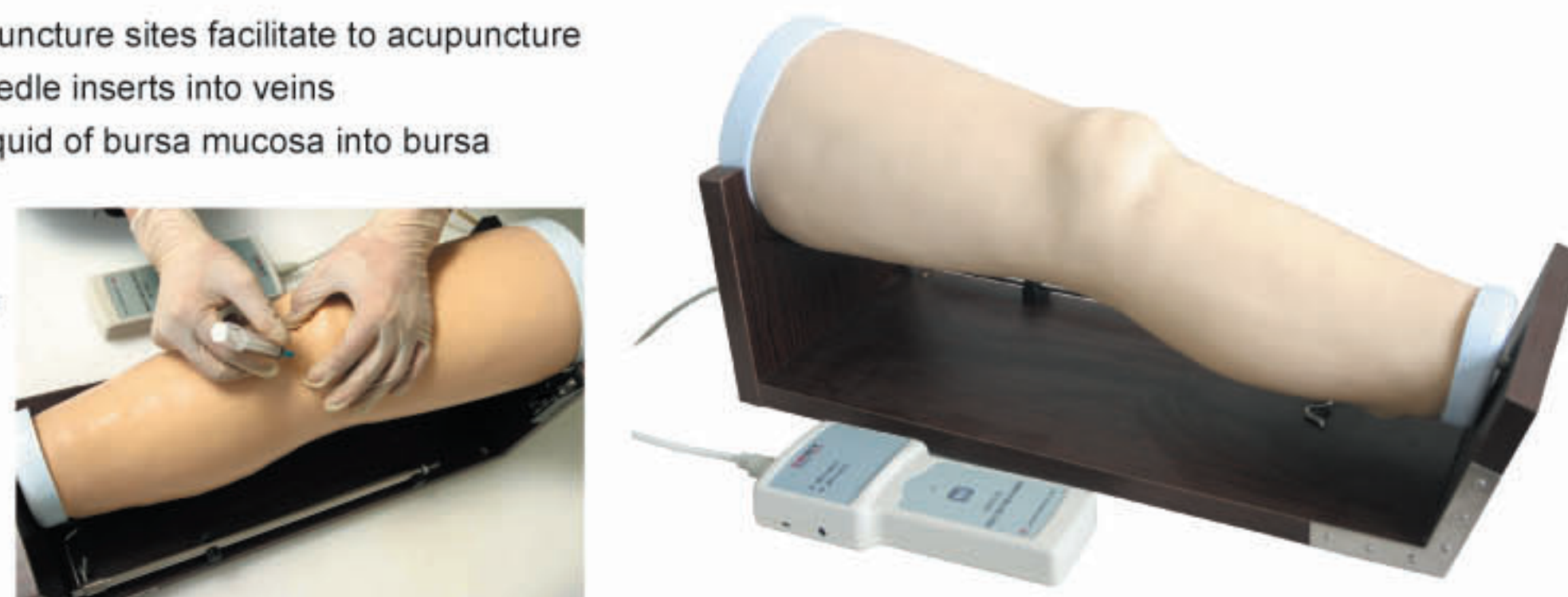


MB/L72 Advanced Electronic Knee Joint Intracavitary Injection Simulator

Made of imported polymer materials, clear layers of skin and muscle, with integrated knee anatomical structure, and manifest body surface symbols

Features:

1. Can puncture repeatedly, standard puncture sites facilitate to acupuncture and there is realistic feeling when needle inserts into veins
2. A single valve can inject simulated liquid of bursa mucosa into bursa mucosa repeatedly
3. Automatic sealing of bursa mucosa
4. Skin surface can be cleaned by suds

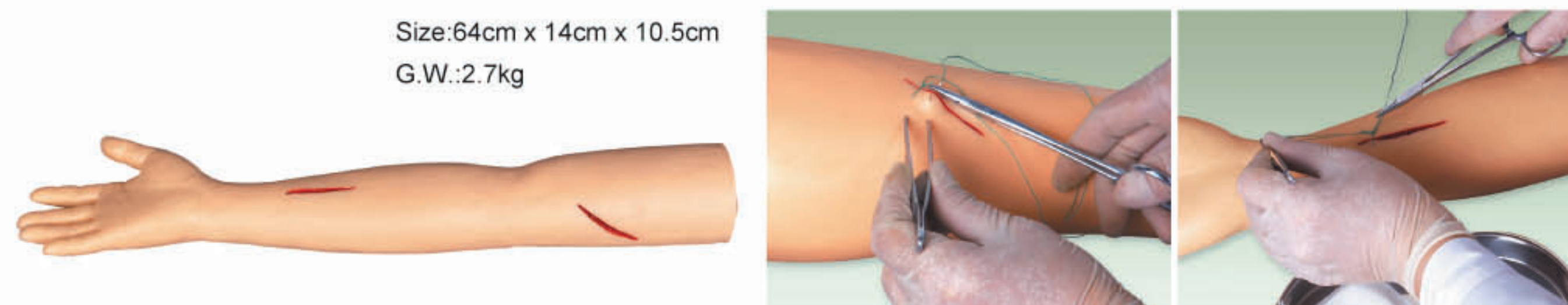


MB/LV1 Advanced Surgical Suture Arm

Features:

1. With features of lifelike shape and realistic touch, the model suitable for cutting and suturing exercise.
2. With wonderful elasticity and flexibility of skin, each models can be used for hundreds of times.
3. Be equipped with incision and suture instrument, suture needle and lines .

Size:64cm x 14cm x 10.5cm
G.W.:2.7kg



MB/LV2 Advanced Surgical Suture Leg

Features:

1. With features of lifelike shape and realistic touch, the model suitable for cutting and suturing exercise.
2. With wonderful elasticity and flexibility of skin, each model can be used for hundreds of times.
3. Be equipped with incision and suture instrument, suture needle and lines .

Size:79cm x 21cm x 28cm
G.W.:5.5kg



MB/LV3 Advanced Suture Training Kit

Features:

1. Combined special surgical suture training module and matching tool kit, the model is the best tool for beginners to improve their surgical suture skill.
2. With wonderful elasticity and flexibility of skin, each model can be used for hundreds of times.
3. The modules can be replaced.
4. There are one instruction disc and one set of surgical instruments in the kit.
5. The model provides a practical tool for suturing training of clinical surgery and is one of the most common teaching tools.



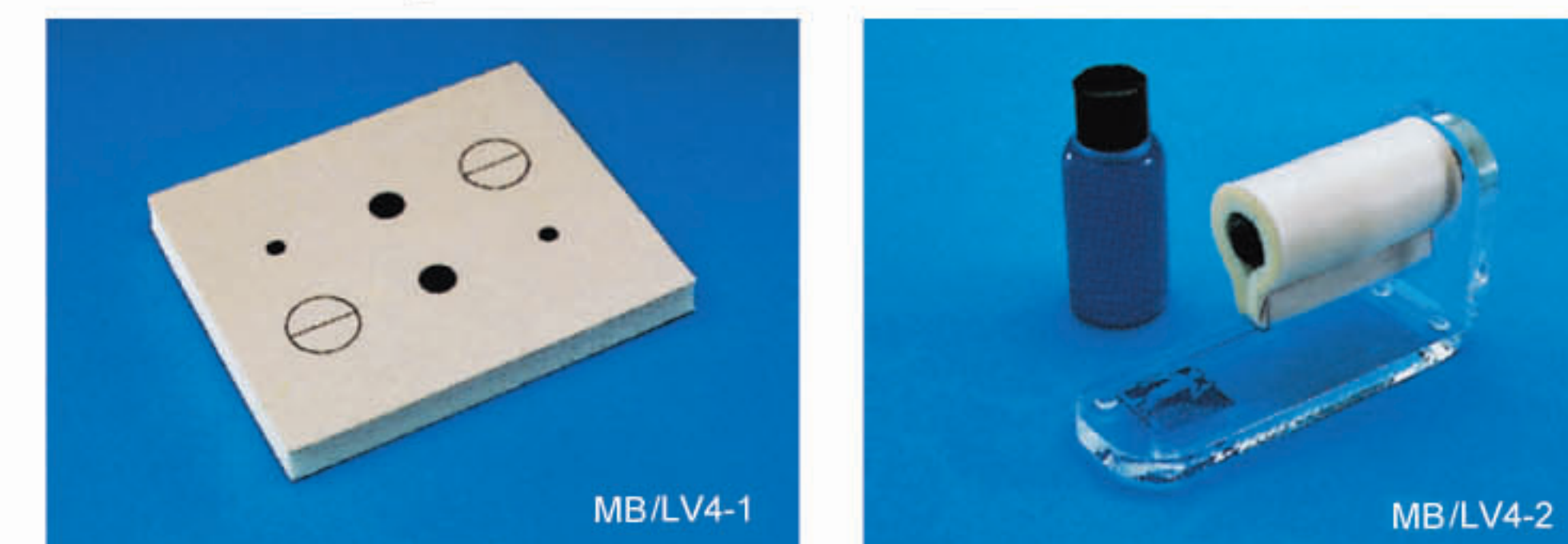
MB/LV4 Local Anesthesia Training Kit

Features:

Provide a skin anesthesia training piece and a ring infiltration anesthesia training piece.

MB/LV4-1 Three kinds of surface markers represent various minor operation areas.

MB/LV4-2 Ring configuration is suitable for local anaesthesia of finger and toe.



MB/LV5 Multi-functional Minor Operation Kit

Features:

1. Three kinds of skin modules: sebaceous gland resection module, lipoma resection module and common skin diseases management module.
2. Each module consists of three pathological changes: skin tag, nevus and seborrheic keratosis.
3. And these pathological changes can be resected.



MB/LV6 Nails Extracting Training Kit

Features:

Provide one stand and three finger tips. The finger tips can be replaced.

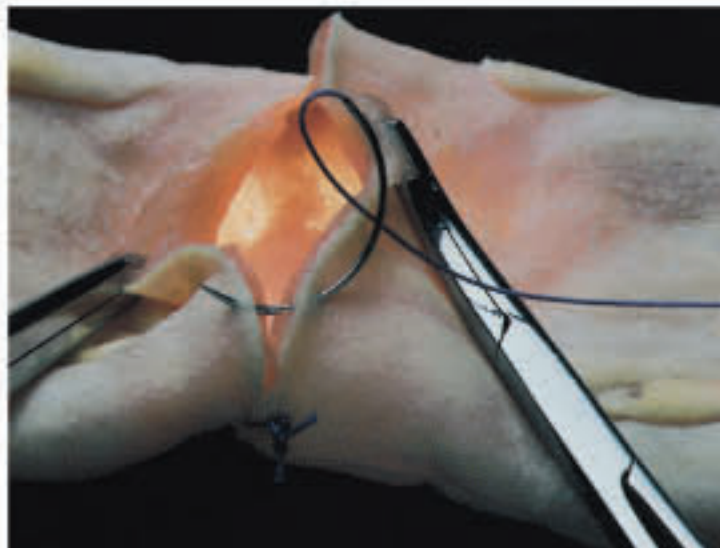
MB/LV6-1 Nails Extracting
Training Pieces



MB /LV7 Intestinal Anastomosis Simulator

Features:

1. Two types: 30mm and 20mm diameter.
2. With serous layer and mucous layer, the intestinal canal can be used to exercise all kinds of anastomosis



MB /LV8 Surgical Knotting Training Simulator

Features:

1. The material is transparent plexiglass. So instruction and training can be observed directly.
2. Almost all kind of surgical knotting methods can be performed on this model.
3. Simulative veins can be replaced.



MB /LV8-1 Vascular Ligation Simulator

Features:

The product is constructed with skin and subcutaneous tissue, with clear layer, realistic tissue tension and elasticity. It can perform skin incision, angiodyastasis, knotting, ligation, stop bleeding, trimming, suture, taking out stitches, etc. Each model comes with coarse and fine blood vessels for repeated angiodyastasis, ligation and stop bleeding practice. Each module can be replaced after damaged. It is the best practice ways for beginners to improve surgical suturing skills.



MB/LV9 Advanced Comprehensive Surgical Skills Training Simulator

The model provides trainings of incision, suturing and ligaturing of skin, blood vessel, intestinal canal and deep tissue

Features:

1. Skin module- surgical incision, suturing, ligaturing, ligature cutting and dermal suture out of sk
2. Intestinal canal module- two types of 20mm and 30mm diameter, practice ring clamp, discussion, anastomosis, ligaturing and cutting of intestinal canal
3. Blood vessel module- practice ring clamp, cutting and ligaturing of blood vessel
4. Deep ligature module- practice deep ligaturing in the narrow space
5. Small size, portable, replaceable modules



MB/LV9-1 Vein Incision Simulator

Features:

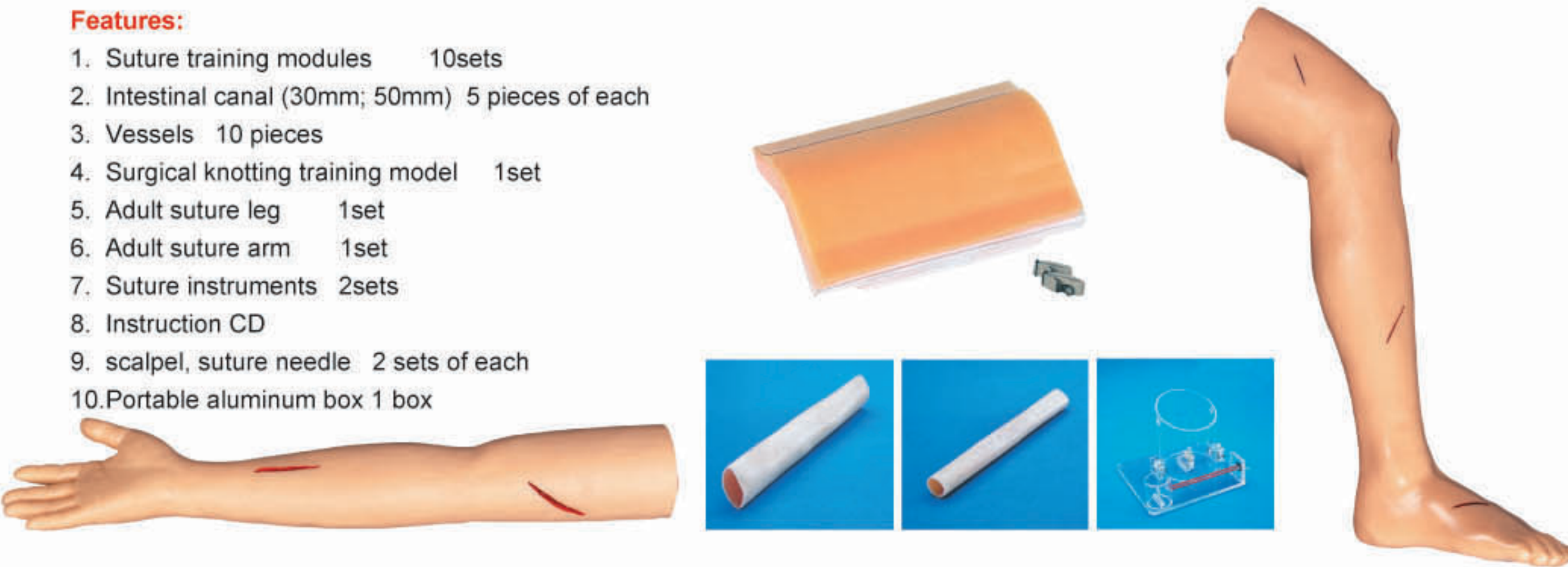
The model is constructed with simulative leg model and great saphenous vein incision model, consisted of skin and subcutaneous tissue with clear layer, realistic tissue tension and elasticity. The leg model is made of imported PVC material, with its skin made of flexible silicone material and internal filled with foam. There is a 14.4x3.9cm groove above the medial malleolus of leg model to place great saphenous vein incision module, with its internal embedded simulative blood vessel which simulate great saphenous vein running design. The module blood vessels can be easily replaced. The model is one of the most commonly used teaching aids for clinical great saphenous vein incision operation.



MB/LV10 Comprehensive Surgery Skills Training Simulator

Features:

1. Suture training modules 10sets
2. Intestinal canal (30mm; 50mm) 5 pieces of each
3. Vessels 10 pieces
4. Surgical knotting training model 1set
5. Adult suture leg 1set
6. Adult suture arm 1set
7. Suture instruments 2sets
8. Instruction CD
9. scalpel, suture needle 2 sets of each
10. Portable aluminum box 1 box

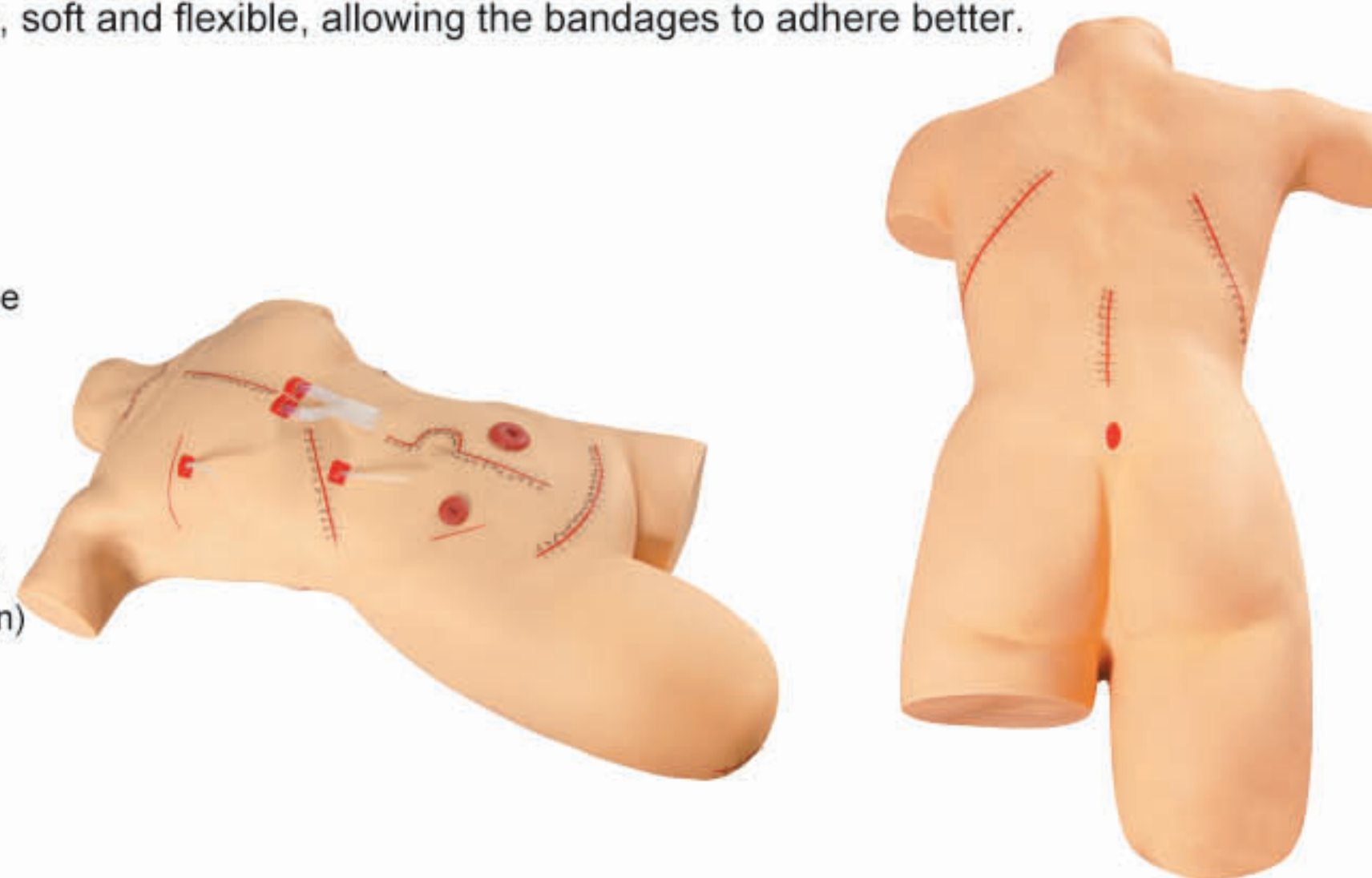


MB/LV18 Surgical Suturing and Bandaging Simulator

The simulator provides commonly used surgical incisions, which simulate all kinds of female thoracic and abdominal incisions, tube drains and amputation stump. Students can practice wounds treatments of washing, disinfecting, changing dressing, bandaging and etc. The skin is dry, soft and flexible, allowing the bandages to adhere better.

Features:

1. Thyroidectomy
2. Mid-sternal split - with two chest tube drains
3. Right mastectomy - with simulated drain
4. Right cholecystectomy - with simulated T-tube
5. Laparotomy
6. Appendectomy
7. Left colostomy
8. Right ileostomy
9. Abdominal Hysterectomy (transverse incision)
10. Left nephrectomy (thoraco-abdominal incision)
11. Right nephrectomy (oblique incision)
12. Laminectomy
13. Sacral decubitus ulcer - stage 2
14. Right thigh amputation stump



MB/LV19 Aseptic Operation Training Simulator

With good flexibility, elasticity and lifelike texture, the model provides a good training aid for aseptic skill.

The model can be used repeatedly.

Features:

1. Disinfection skill training
2. Abdominal wall anatomy: skin, subcutaneous tissue, abdominal muscle and peritoneal membrane.



MB /LV20 Abdominal Cutting and Suturing Simulator

With good flexibility, elasticity and lifelike texture, the model provides a good training aid for abdominal cutting and suturing skill. It can be used repeatedly and replaced when damaged.

Features:

1. Abdominal cutting and suturing training
2. Abdominal wall anatomy: skin, subcutaneous tissue, abdominal muscle and peritoneal membrane. The abdominal wall pad can be used repeatedly.
3. Inflate the balloon in peritoneal cavity and the abdominal wall will be under tension. The aim for the trainee is to enter the peritoneal cavity and close it again without bursting the balloon. (damaging the intestines)not.



MB/LV11 Advanced Trochar Training Simulator

Features:

1. Be used for insertion and puncture exercise of abdominal wall trochar
2. Obvious anatomical layer, elastic skin and realistic touch feeling; realistic resistance feeling can be felt as needle penetrate into the skin, and characteristic of "pop" can be felt when needle has been penetrated into the skin
3. Observe the whole insertion process of trochar through the transparent base
4. Insertion with various types of trochar

MB/LV12 Advanced Low-set Bandaging Simulator

Features:

1. Simulate leg amputation patients, right leg cut off below the knee, left leg cut off in the middle of thigh
2. Convenient and reasonable model design, bandages can bypass the buttocks and wrap to the ridge level of the iliac
3. Circular bandage, spiral bandage, serpiginous bandage, figure of eight bandage
4. Demonstrate the fixing method of the two broken end after wrapping the bandage



MB/LV13 Advanced Bandaging Model of Superior Position

The model is made of special material, which is soft and elastic.

Features:

1. Simulate head and neck, chest and upper limb amputation patient, right arm cut off from the wrist, left hand cut off from the elbow
2. Provide many kinds of bandaging method: circular bandage, spiral bandage, serpiginous bandage, figure of eight bandage, capeline bandage, masklike bandage, monocular bandage
3. Demonstrate the fixing method of the two broken end after wrapping the bandage
4. Keep arms a little external rotation to facilitate the bandaging



MB/LV14 Advanced Ocular Inspection Simulator of Retinopathy

Replacement of different eyeground diseases, slide simulates common clinical oculopathy, including:

1. Normal retina
2. Subhyaloid hemorrhage
3. Age-related retina macular degeneration /colloid bodies
4. Central retinal vein occlusion
5. Retinal separation
6. Ischemic fundus papillopathy
7. Hypertensive retinopathy
8. Papilledema
9. Excavation of optic disc
10. Optic atrophy
11. Mild background diabetic retinopathy
12. Background(pure) diabetic retinopathy
13. Preproliferative diabetic retinopathy 1
14. Preproliferative diabetic retinopathy 2
15. Hypertrophic diabetic retinopathy
16. Diabetic retinopathy
 - Realistic affection, easy to replace and operate
 - In favor of repeated contrast observation
 - Provides 16 kinds of retinopathy accessories

MB/LV16 Advance Ear Inspection Simulator

Simulation of right ear, standard intra-aural examination site

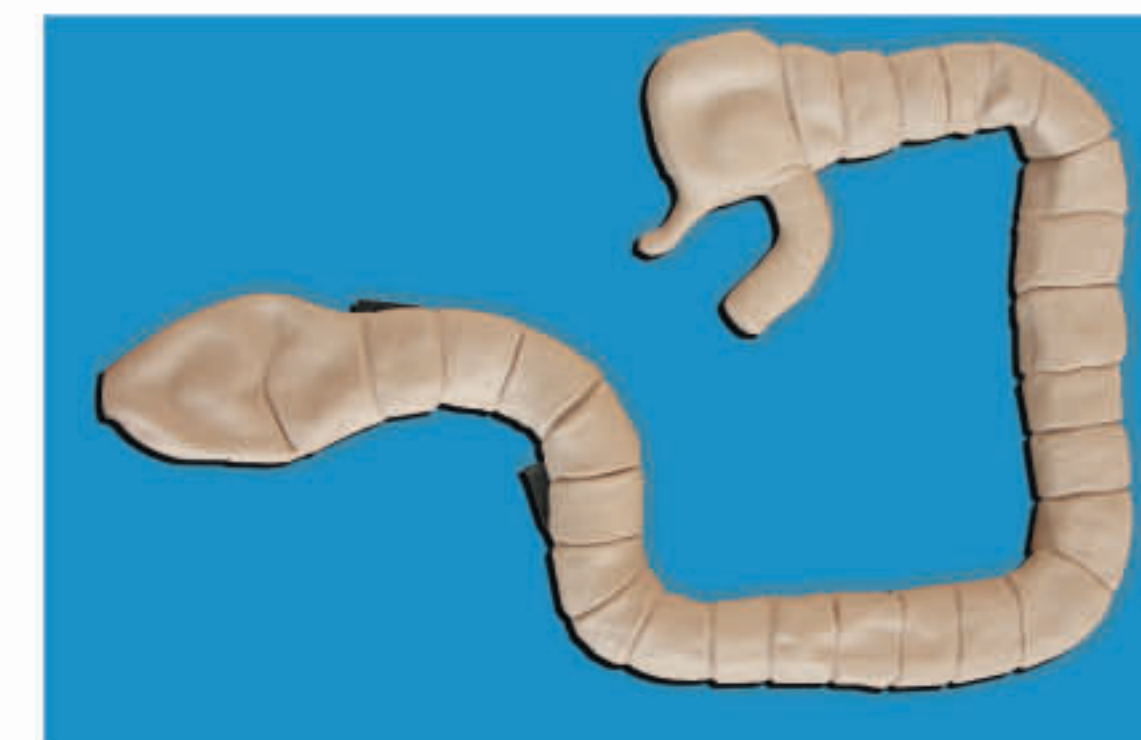
1. Accurate anatomical structure of auricle, external auditory canal, tympanic membrane
2. Ear lesion examination via otoscope
3. Provide 14 kinds of ear lesion components for conveniently replacing
4. Include:
 - 1) Normal auricle
 - 2) Normal ear drum
 - 3) Tympanic membrane hyperemia
 - 4) Otopiesis
 - 5) Small tympanic membrane perforation
 - 6) Whole tympanic membrane perforation
 - 7) Traumatic perforation of tympanic membrane
 - 8) Myringotomy and tube insertion
 - 9) Tympanosclerosis
 - 10) Tympanosclerosis crescentic sclerosis plaques
 - 11) Serous otitis media effusion
 - 12) Early acute congestive otitis media
 - 13) Chronic suppurative otitis media
 - 14) Pearly tumor
 - 15) Osteoma of external auditory canal
5. Earwax clean-up operation practic



MB/LV30 Sigmoidoscope Examination Simulator

Features:

1. Be able to observe the contours of large intestine and the inner structure of intestinal cavity;
2. Can observe intestinal hypertrophic colonic polyp and canceration through sigmoidoscope; can identify benign or malignant pathological change;
3. The large intestine model is mounted on the base plate;
4. Provide multiple intestinal diseases for diagnosis and can practice intestinal photography;



MB/LV17 Advanced Nasal Hemorrhage Simulator

Features:

1. Simulate an adult head and neck
2. Accurate anatomic structure with nasal cavity and nasal septum
3. Simulate all clinical symptoms of epistaxis and train students' ability to deal with contingency
4. Provide trainings of simple hemostasis, cauterization and nasal packing
5. Green light indicates successful hemostasis
6. Can control the speed and amount of bleeding

MB/ LV41 Advanced Ear Diagnostic Simulator

Features:

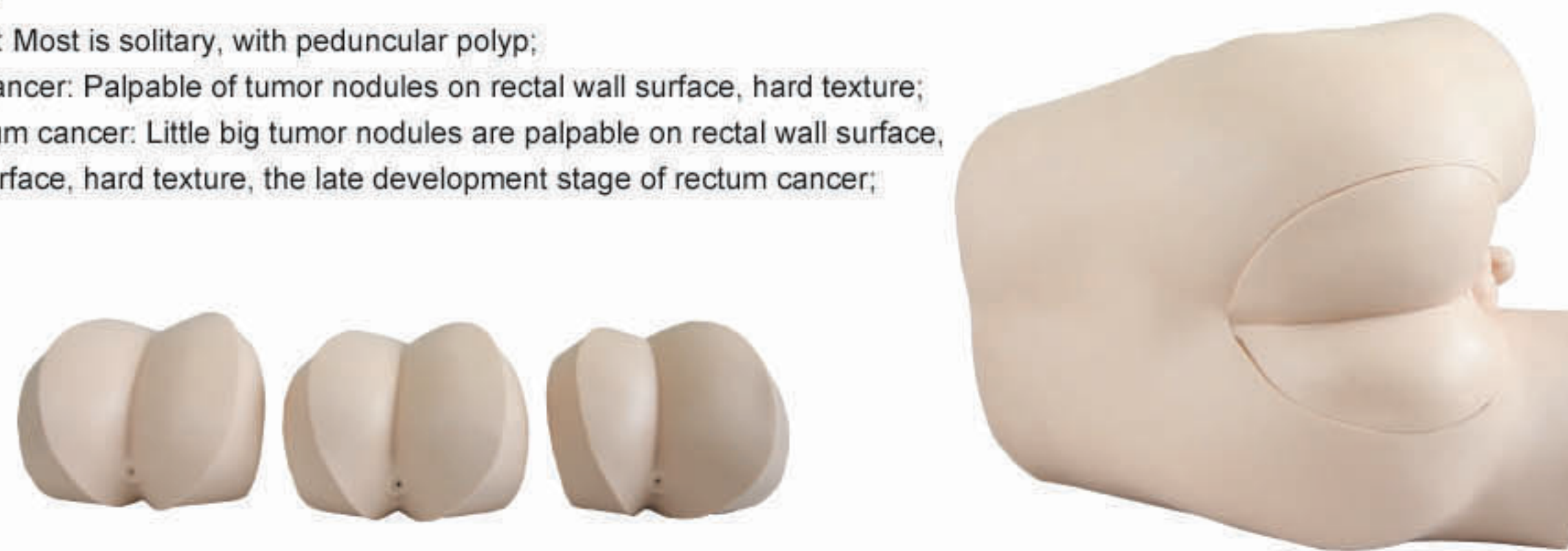
- 1) Normal auricle
- 2) Injury of auricle
- 3) Benign tumor of auricle
- 4) Malignant tumor of auricle
- 5) Normal tympanic membrane
- 6) Tympanic membrane hyperemia
- 7) Retracted tympanic membrane
- 8) Small tympanic membrane perforation
- 9) Whole tympanic membrane perforation
- 10) Traumatic perforation of tympanic membrane
- 11) Dry central perforation of the posterior
- 12) Myringotomy with insertion of tube
- 13) Bullous myringitis
- 14) Herpes blisters on the tympanic membrane
- 15) Eardrum Tympanosclerosis
- 16) Tympanosclerosis crescentic sclerosis plaques
- 17) Serous otitis media effusion
- 18) Congestive early acute otitis media
- 19) Acute otitis media
- 20) Purulent otitis media
- 21) Chronic suppurative otitis media
- 22) Pearl-tumor
- 23) Foreign body in ear
- 24) Ear washing and drops

MB/LV39 Advanced Rectal Touch Examination Simulator

Digital rectal examination is the most necessary and simple examination method for BPH and rectal neoplasms. The model features clear anatomy structure of anus, rectum and prostate, vivid appearance, realistic touch feeling, easy replacement of prostate and rectum connection parts.

Features:

1. Prostate palpation:
 1. Normal prostate: chestnuts size, can touch sulcus of prostate;
 2. BPH: I degree of hyperplasia, egg size, shallow of sulcus of prostate;
 3. BPH: II degree of prostatic hyperplasia, duck egg size, absent of sulcus of prostate;
 4. BPH: III degree of prostatic hyperplasia, severe prostatic enlargement, regular surface and hard texture, goose' egg size, cannot touch the bottom of the prostate;
2. Rectum palpation:
 1. Normal rectum
 2. Rectum polyps: Most is solitary, with peduncular polyp;
 3. Early rectum cancer: Palpable of tumor nodules on rectal wall surface, hard texture;
 4. advanced rectum cancer: Little big tumor nodules are palpable on rectal wall surface, with uneven surface, hard texture, the late development stage of rectum cancer;



MB/L63 Prostate Examination Simulator

Features:

Basing on different degrees of prostate carcinoma, we design four interchangeable prostates:

1. Benign, slightly enlarged, but normal prostate gland simulates benign stage.
2. Prostate with two discreet, hard nodules (one is at left lobe; the other is at right lobe) simulate beginning stage.
3. Prostate with easily palpable large mass simulate intermediate stage. The small nodule has increased in size and has become an external hard mass on the surface of the gland.
4. Prostate with malignant invasive cancer simulate terminal stage. This gland is totally replaced with carcinoma. The entire gland will feel hard and irregular.

